

PK 12.501 SLD 5

SINGLE LINK AND PERFECT POWER TO WEIGHT RATIO OFFER EFFICIENT LOAD HANDLING

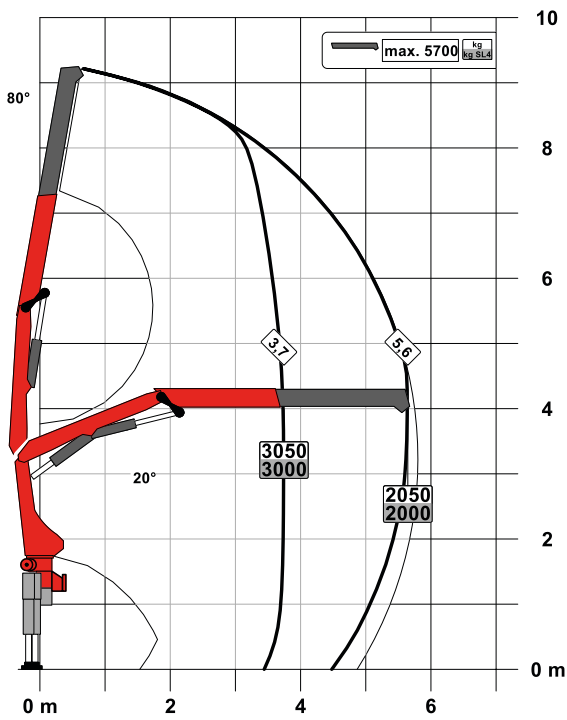
LIFETIME EXCELLENCE



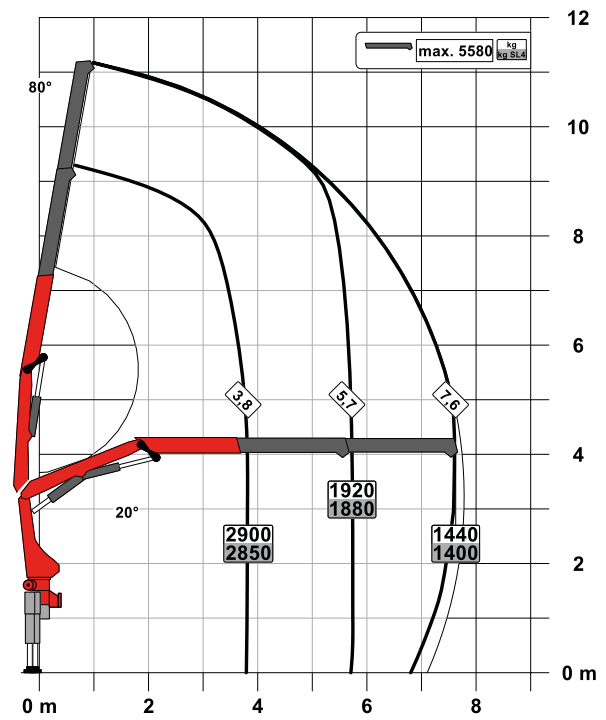
PK 12.501 SLD 5

PERFECT DIMENSIONS

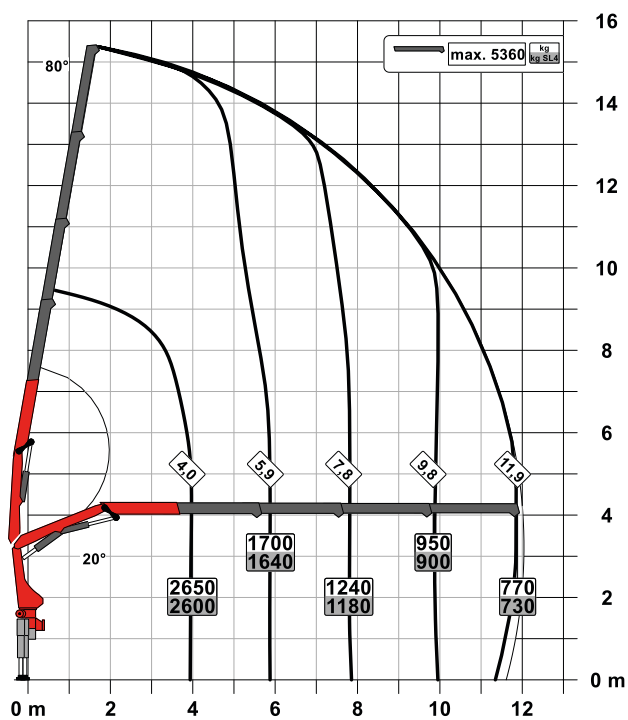
STD

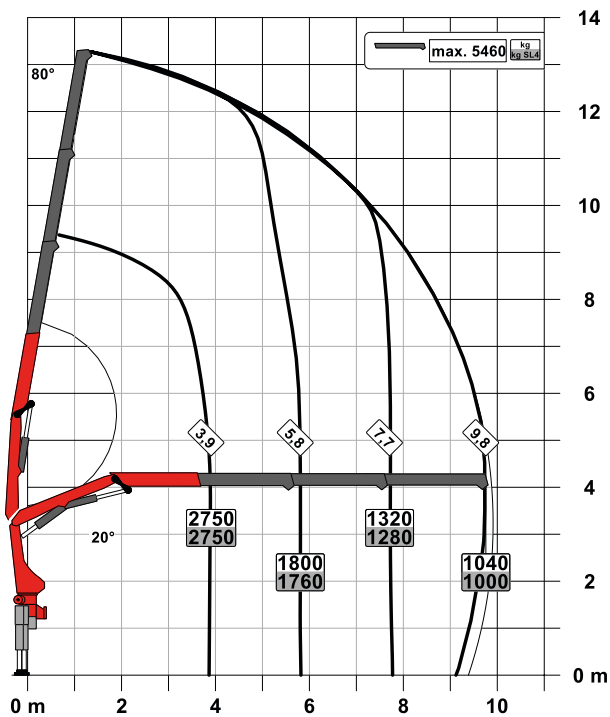


A



C



B

SLD 5

- Single Link
- Paltronic overload protection
- E-HPLS
- Load Sensing valve
- Radio remote control with LED display
- Optional:
 - Stability monitoring system ISC-S (standard for CE), HPSC-L, HPSC-E
 - Rope winch 1.5t on the knuckle boom
- NON-CE and CE model

Technical specifications

EN 12999 HC1 HD4/S2

Max. lifting moment	11.4 mt/112.2 kNm	82160 ft.lb
Max. lifting capacity	5700 kg/55.9 kN	12570 lb
Max. hydraulic outreach	12.0 m	39' 6"
Max. manual outreach	15.9 m	52' 2"
Slewing angle	400°	
Slewing torque	1.3 mt/12.7 kNm	9370 ft.lb
Stabiliser spread (std./max.)	3.3 m/5.6 m	10' 10"/18' 4"
Fitting space required (std.)	0.72 m	2' 4"
Width folded	2.32 m	7' 7"
Max. operating pressure	360 bar	5220 psi
Recommended pump capacity	from 45 l/min to 60 l/min	11.9 US gpm to 15.9 US gpm
Dead weight (std.)	1170 kg	2580 lb

KP-PK11/12SLDM3+EN

Cranes shown in the leaflet are partially optional equipped and do not always correspond to the standard version. Country-specific regulations must be observed. Dimensions may vary. Subject to technical changes, errors and translation mistakes.